



HOWTO -- Documentation

The documentation is simple and straight forward. Just start with the Introduction and follow the install steps. Make sure to read the Annex, where you'll find a big FAQ section.

- I. Introduction
- II. Overview of PING features
- III. Prerequisites
- IV. Configuring a PC to serve as a host for your images
- V. Downloading and burning the PING ISO
- VI. Installing your own PXE Server to allow network hosts to boot PING
- VII. Using PING
- VIII. Storing an image on a bootable ISO
- IX. Annex – Exhaustive list of supported parameters + FAQ
- X. Support
- XI. License

Introduction

The following installation steps will let you to backup and restore whole systems through your network or removable media (e.g. CDs, DVDs, and USB mass storage devices).

At the end of the installation, you should be able to boot any computer on a CD/DVD or your network and press the F12 key during the boot process to launch the PING software (PXE). Using this tool, you should be able either to backup, or to restore systems and partitions. Think of it as a Ghost-like process.

Overview of PING Features

PING is more than a Ghost™ alternative. PING is a highly-customizable cloning application, adapted to a wide range of hardware configurations, and it can also be seen as a handy toolbox for any system admin to have.

Here's a brief enumeration of PING's most used features...:

- PING's OS is Linux. PING is often updated, and comes with a kernel full of recent drivers. Thus, PING should detect 99% of your hardware (network adaptors, IDE/SATA/SCSI drives).
- PING is a live Linux. So, even if you boot it from a CD, you still can use your drive for any other media.
- PING can be booted from any kind of usual device – network (PXE), CD, DVD, USB drive, USB key, floppy, local hard disk drive.
- You can customize PING a number of ways. A config file makes it possible to have all popup boxes skipped, which means you can just boot, and leave.
- PING is a scriptable environment. You may add scripts to be executed before, meanwhile and after PING's execution, or even modify some parts of the OS to suit your needs.
- You may even ship a computer with a restore partition – enabling users to boot a hidden partition, so to restore their system (or update the image, if you allow them to).
- Finally, PING is small, and loads fast. Yet, it's a fully-functional OS, and you'll find plenty of useful system applications in it – fdisk, parted, ntfstools, samba, cmospwd, partimage, partclone, zsplit, testdisk... Everything an admin may need, and recent versions.

Prerequisites

Using PING on a Directly Attached Hard Drive:

- **Hard drive space.** To store a full 40 GB hard disk, you may need up to 40 GB (though compression may help).

Using PING Over a Network:

- **A LAN (Local Area Network).** At least two connected computers. One of these computers is to be copied or restored, and the other is supposed to store the images you'll do with PING.
- **A Share.** The computer used to store the images must be able to share files (any Microsoft Windows computer can). If you are a Linux user, install Samba.
- **Space.**

It's almost nothing to prepare. Yet, make sure to test your share if you make a new one, and make sure the user you plan to use to map the share has sufficient rights.

Configuring a PC to serve as a host for your images

SKIP this step if all you want is a locally-stored backup of your system.

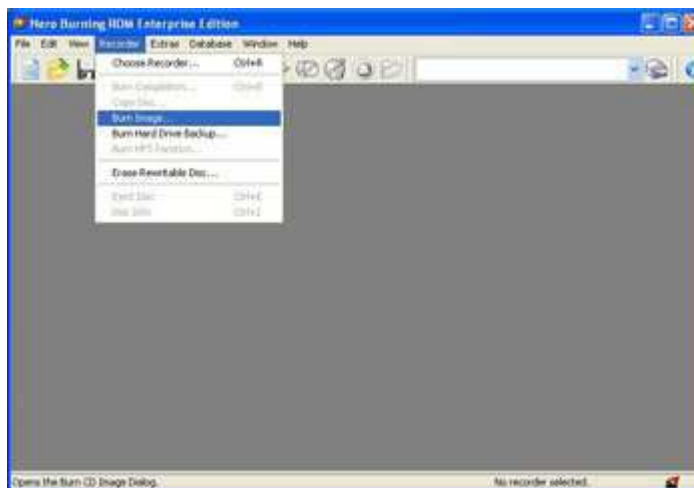
Directory names are given here as samples. Adapt the following according to your specific needs and configuration.

1. Open C:\ and make a new directory, called **PartImage**.
2. Right-click on the **C:\PartImage** folder and **share it**. Set the permissions as suits you. Just keep in mind that you'll have to be able to write on this shared folder from any host on your network. Create a user if necessary, and... test it ☺

Downloading and Burning the PING ISO

SKIP this step if you only want to setup a PXE server.

1. **Download PING.x.yz.iso** (where x.yz is the version number). Get all mentioned files on the PING download page (<http://ping.windowsdream.com>).
2. **Burn it** using your favorite burning software
 - o **With Nero:**
 1. Open Nero Burning Rom
 2. Select Recorder / Burn Image



3. **Browse to PING.x.yz.iso**
 - o **If you have no tool to burn an ISO :**
 1. Go to [Alex Feinman's website](#) and download what **IsoRecorder** version suits your configuration. It's freeware, and it just works better than a number of burning apps. **Install it.**
 2. Then, open the folder containing the **PING.x.yz.iso** file, right-click on the ISO, and choose "**Copy Image to CD**"

Installing your PXE Server to allow network hosts to boot PING (Optional step)

SKIP this step if you only want a backup of your system stored locally or on removable media.

Directory names are given here as samples. Adapt the following according to your specific needs and configuration.

- **If you've got a working RIS Server (like MS Windows Server 2000 or 2003) :**

1. Have Windows Explorer show files extensions, as this is a classical, well-known caveat in this configuration step.
2. You probably have a `\\server_name\RemInst\Setup\English\Images\` directory, used to share images for the RIS server.
3. **Create the following folders:**
 - `\\server_name\RemInst\Setup\English\Images\PING\`
 - `\\server_name\RemInst\Setup\English\Images\PING\i386\`
 - `\\server_name\RemInst\Setup\English\Images\PING\i386\templates\`
 - `\\server_name\RemInst\Setup\English\Images\PING\i386\templates\pxelinux.cfg\` (*yes, this is a folder, not a file*)
4. In the `\\server_name\RemInst\...\templates\` directory, download the following files:
 - **kernel**
 - **initrd.gz**
 - **pxelinux.0**
5. In the `\\server_name\RemInst\...\templates\` directory, create a text file that you'll name **ping.sif**, containing:

```
[OSChooser]
Description = "PING X.YZ (Partimage Is Not Ghost)"
Help = ""
LaunchFile = "Setup\English\Images\PING\i386\templates\pxelinux.0"
ImageType = Flat
Version="X.YZ"
```

6. In the `\\server_name\RemInst\...\templates\pxelinux.cfg\` directory, create a text file that you'll name **default** (not `default.txt`), containing (be careful that the APPEND line must not have linefeeds! It's only one line) :

```
DEFAULT default
PROMPT 1
TIMEOUT 26
DISPLAY boot.msg

LABEL default
KERNEL kernel
APPEND vga=normal devfs=nomount pxe ramdisk_size=33000 load_ramdisk=1
init=/linuxrc prompt_ramdisk=0 initrd=initrd.gz root=/dev/ram0 rw
noapic nolapic lba combined_mode=libata ide0=noprobe nomce pci=nommconf
pci=noms iirqpoll quiet

LABEL dummy
KERNEL kernel
```

- **If you have no working RIS Server and want to build your own easily :**

1. Install TFTP32 from [Ph. Jumin's web site](#)
2. On your future PXE / RIS Server, **create the following directories**:
 - D:\PXE\
 - D:\PXE\i386\
 - D:\PXE\i386\templates\
 - D:\PXE\i386\templates\pxelinux.cfg\
 - 3. In the `D:\PXE\i386\templates\` directory, download the following files:
 - **kernel**
 - **initrd.gz**
 - **pxelinux.0**
 - 4. In the `D:\PXE\i386\templates\pxelinux.cfg\` directory, create a text file that you'll name **default** (not `default.txt`), containing (be careful that the APPEND line must not have linefeeds! It's only one line) :

```

DEFAULT default
PROMPT 1
TIMEOUT 26
DISPLAY boot.msg

LABEL default
APPEND vga=normal devfs=nomount pxe ramdisk_size=33000 load_ramdisk=1
init=/linuxrc prompt_ramdisk=0 initrd=initrd.gz root=/dev/ram0 rw
noapic nolapic lba combined_mode=libata ide0=noprobe nomce pci=nommconf
pci=noms iirpoll quiet

LABEL dummy
KERNEL kernel
    
```

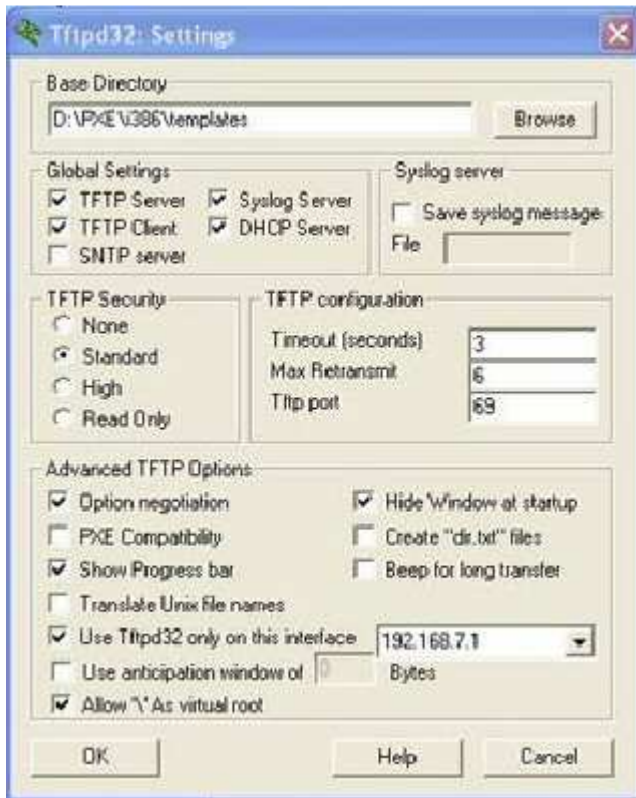
5. Launch TFTP and configure it the following way:



If you've got several network cards in your computer, you'll have to choose in the **server interface** area the one that communicates with your other LAN hosts.



Configure your **DHCP Server** here. Booting with PXE is not possible unless you define it. A common network configuration is to have addresses like 192.168.0.x with 192.168.0.1 as the router (often a workstation connected both to the internet, both to the LAN, and sharing the internet connection on the LAN).



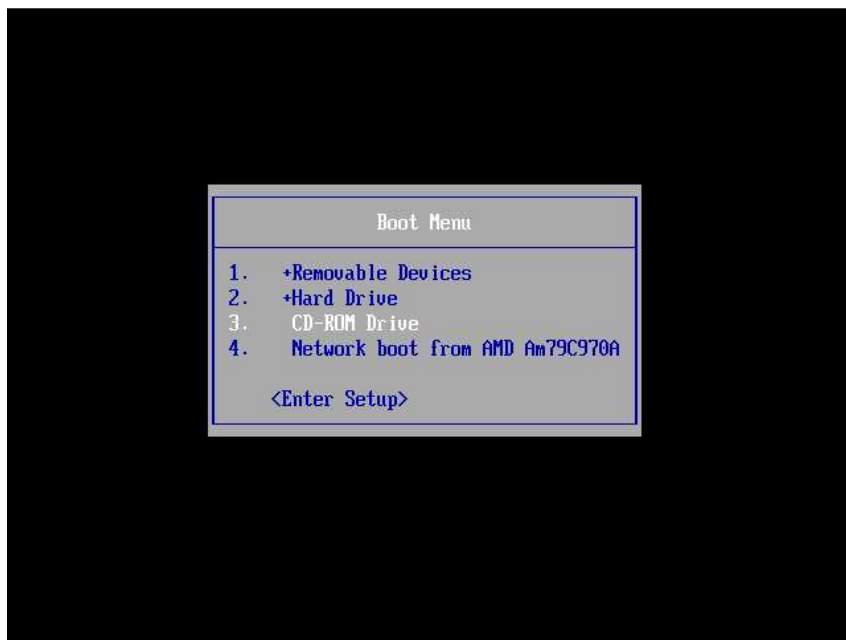
Nothing special here.

6. **That's all!** Test your PXE Server: go to a LAN workstation, reboot it, and press F12 to boot on the network. Note: if you don't see the F12 prompt, you might have to modify the BIOS setup and enable PXE.

In the following section, we'll be booting from a CD, made by burning the PING ISO. But this should give exactly the same result.

Please note that some screenshots might not be up to date, for PING is frequently improved.

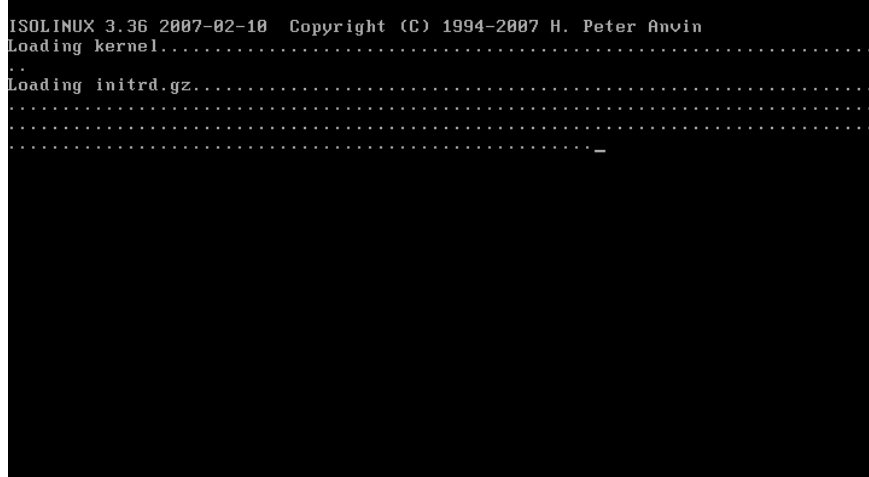
Using PING



Choose to boot on the CD you've burnt with the PING ISO.

If you don't see the option in your boot sequence, you'll probably have to modify your BIOS settings.

Note that a PXE Server is needed to boot from the network.



The Linux distribution is starting.

```
Linux PING 2.6.21.5 #1 SMP PREEMPT Tue Jun 12 10:35:37 CEST 2007 i686 i686 i386
GNU/Linux

***      PING (Partimage Is Not Ghost) -- version 2.00 RC1      ***
***      Get doc and latest release on PING website          ***
***      http://ping.windowdream.com/                        ***
***      Still a RC release -- 2007-06-24                   ***

Type [ENTER] to go on, x to get a shell (login as root, no passwd).

The shell has every tool you need to modify or format partitions,
or to access data on a local hard disk. Most filesystems are
currently supported, NTFS included (ntfs-3g).
To mount a NTFS volume: mount -t ntfs-3g /dev/sda1 /mnt/dos

>> _
```

Press ENTER to proceed.

If you don't want to use our menu-driven wizard, press x and ENTER to get a shell. The root user account has no password.

```
Welcome to PING (Partimage Is Not Ghost)!

This tool can be used both to backup a Ghost-like image of your hard
disk and to restore your hard disk from such an image. Please, be
aware that if you choose to restore your hard disk, ALL the data
contained on this computer might be lost during the restoration. You
may choose to abort now, by stopping the computer now.
```

< OK >

Read the warnings carefully and press ENTER to proceed.

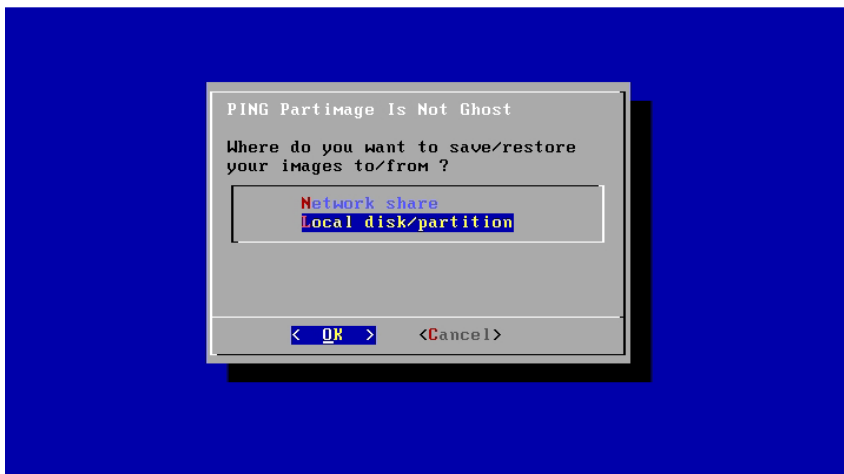
```
PING Partimage Is Not Ghost

When the job is completed, do you
want to...
```

Reboot the system
Get a shell (root)
Shutdown

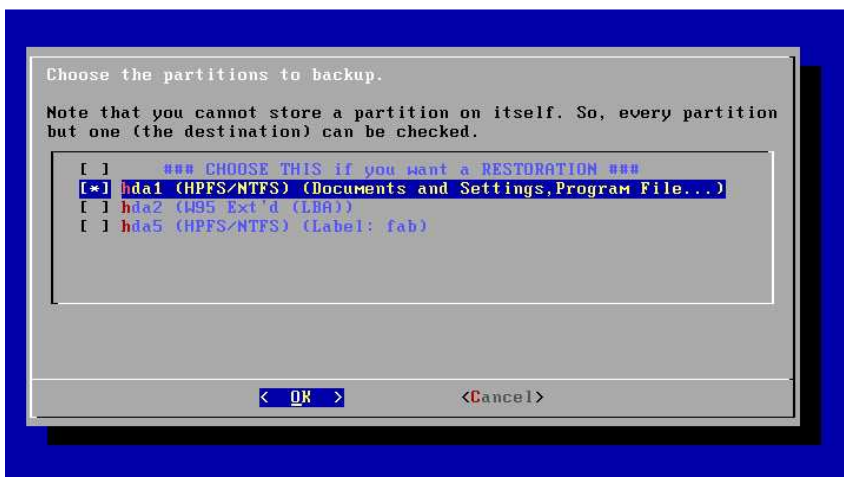
< OK > <Cancel>

Choose what should happen at the end of the backup or restoration process. You might want to get a shell to access the log. The command line instruction is "vi /tmp/x.log".



You can backup to and restore from a local partition or a network drive.

These illustrations will start with a local backup.

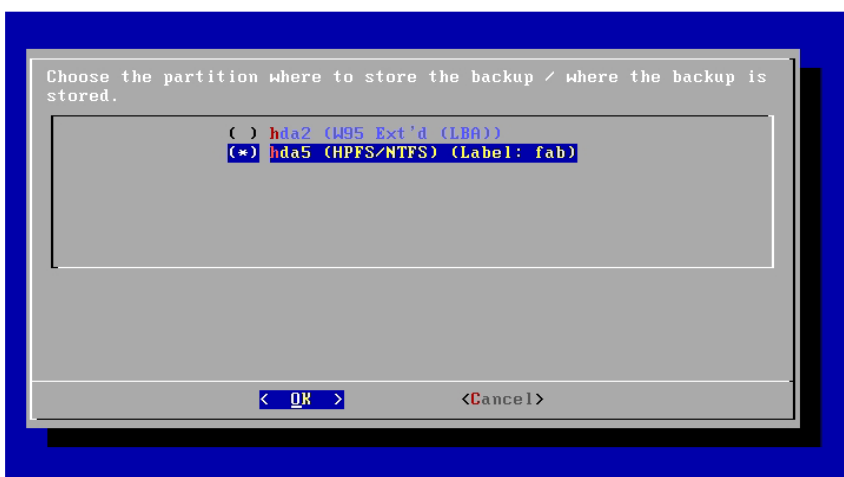


All available partitions should be enumerated here, with either a NTFS label or the first few directories.

If you want to restore an image to the workstation, select the first option.

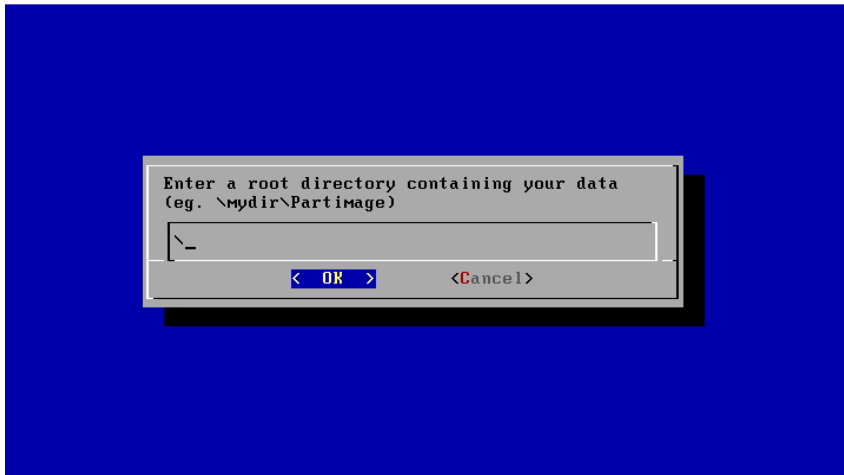
Otherwise, select all partitions you want to backup. Be aware that you should leave at least one partition unselected, as PING won't store a partition onto itself.

An Exception: if you've got only one partition, you'll be able to select it, and the script will suggest splitting the partition into two partitions. Although this works, you may want to repartition the drive before running PING.



Now, choose where to store the image.

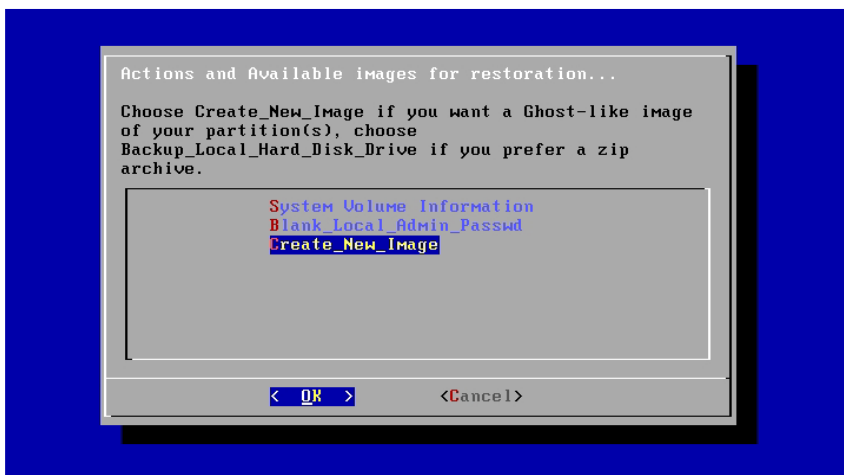
In our example, we had the C: part on /dev/hda1 and a D: part on /dev/hda5 (which Windows always stores in an extended /dev/hda2 partition). We'll store an image of C: on D:.



If you've prepared a \Partimage directory on your destination partition, enter it here.

In our case, we had not, and so we entered the root directory (and our first image will be stored on D:\).

It's a good idea to have everything stored in a dedicated directory.



Here, you'll find the **list of available images**. They are stored in the directory we've just chosen. Choosing one image will restore the computer with it, thus erasing all your hard disk.

Apart the images themselves, you'll always find 2 special choices,

obviously necessary to let you ask for an image (or blank Windows administrator password, if needed.)

In our example, we had chosen the D:\ directory, and D:\ was empty. That's why you can see a "System Volume Information" directory, present on any NTFS partition. (We should have created a D:\Partimage directory and chosen it for the example to be clearer – sorry.)

Now, let's explain what should have happened if we had chosen to store the image onto a Network Share rather than a Local Partition...

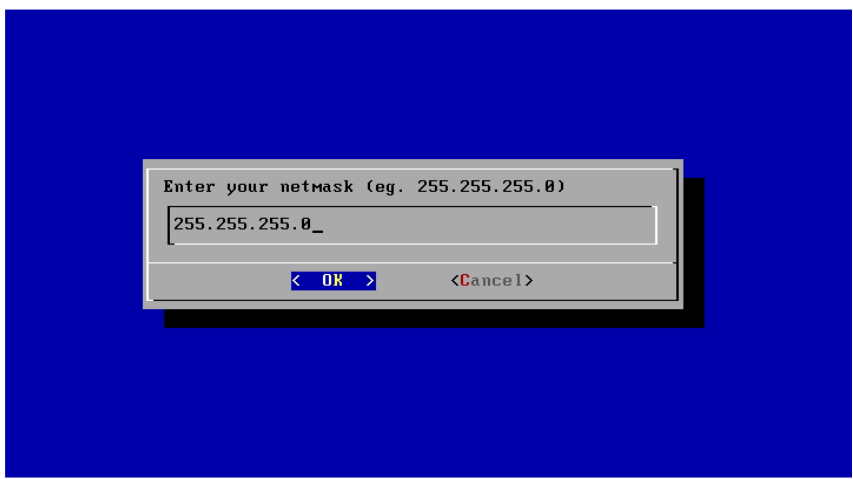


Remember where we were...

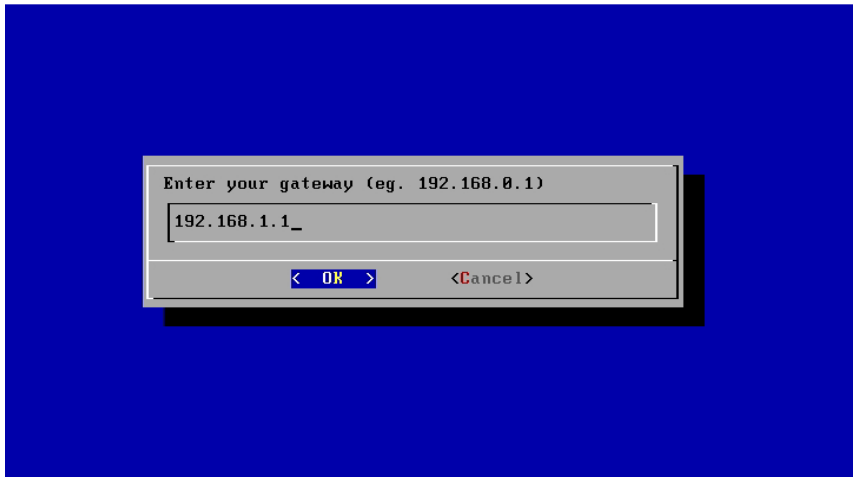
When choosing this option, the script will try to get an IP through DHCP. If this fails, you'll have the possibility to give manual parameters, as in next screenshots.



Give your IP address.

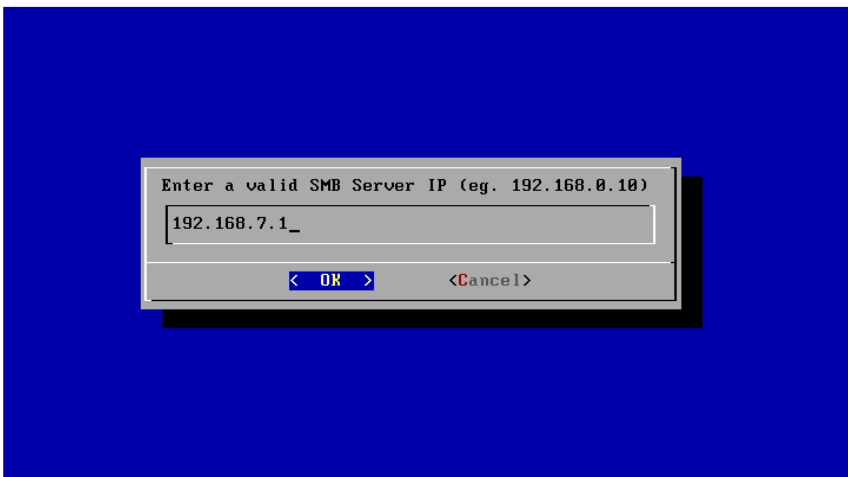


...and your netmask...



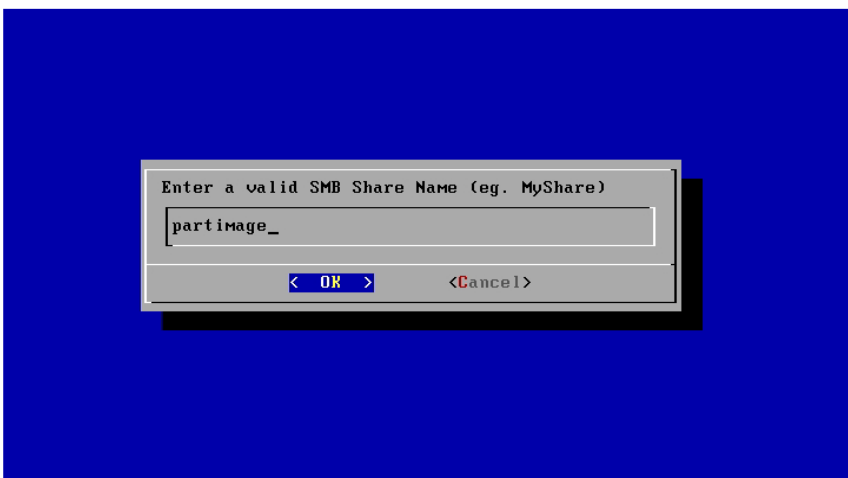
...and finally your gateway.

Note : the following shows accessing a SMB (Microsoft Netbios) network share. But PING has been developed and now supports also NFS, FTP (and, somewhat, SSH). Same idea.



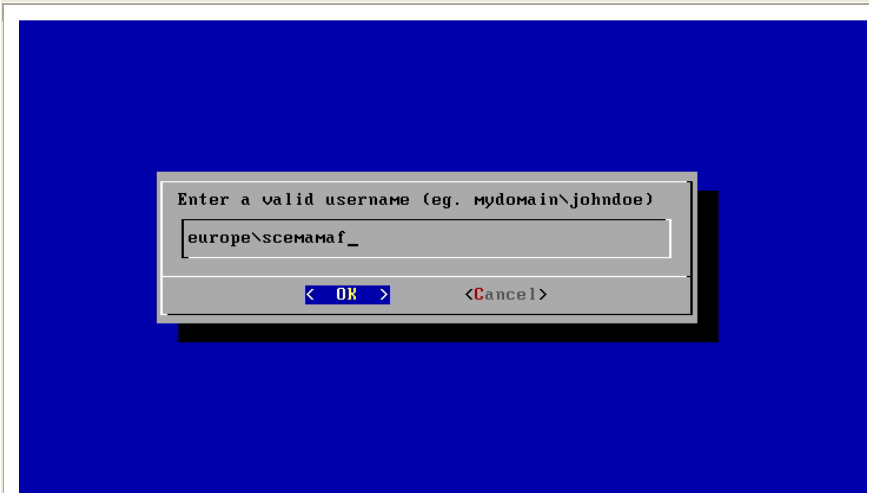
We need to know where to save the image.

Give the IP of the computer you've shared the **PartImage** folder on (as explained in the prerequisites).



Now, the **name of the share**.

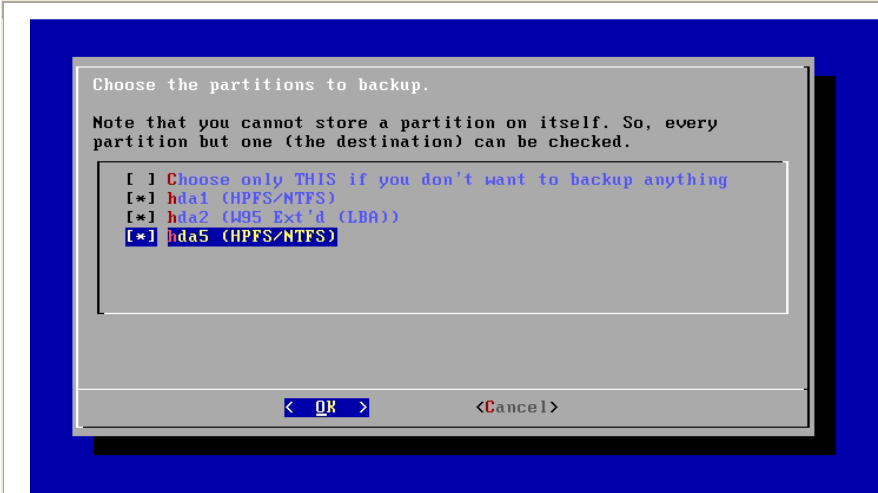
Example:
 \\mydomain\temp => the share is called temp.



Now, the **user name** on the network.

It might also be a local account (eg.: administrator).

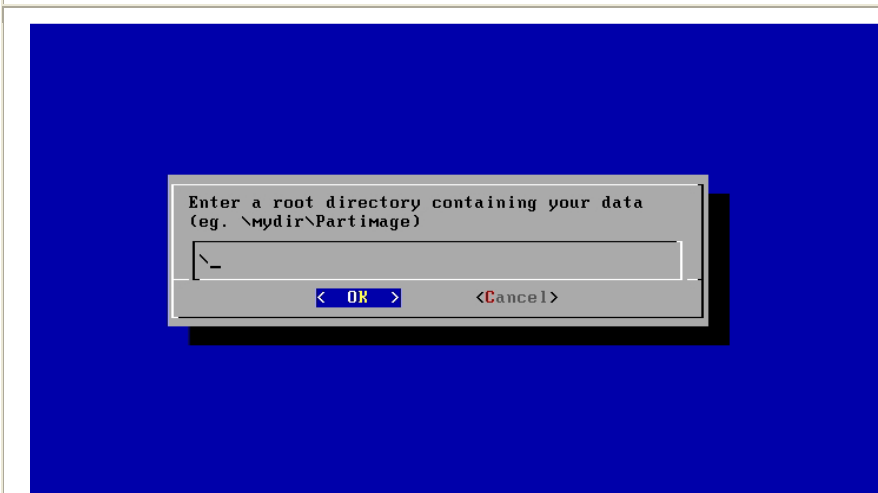
(You'll be asked for the password afterwards, and it won't be displayed when typing it.)



All connected hard disk drives, USB mass storage devices included, will be scanned and all available partitions should be enumerated here, with either a NTFS label, or first found directories.

If you want to restore an image to the workstation, check the first option.

Elsewhere, choose all the partitions you want to backup. You can choose all of them.

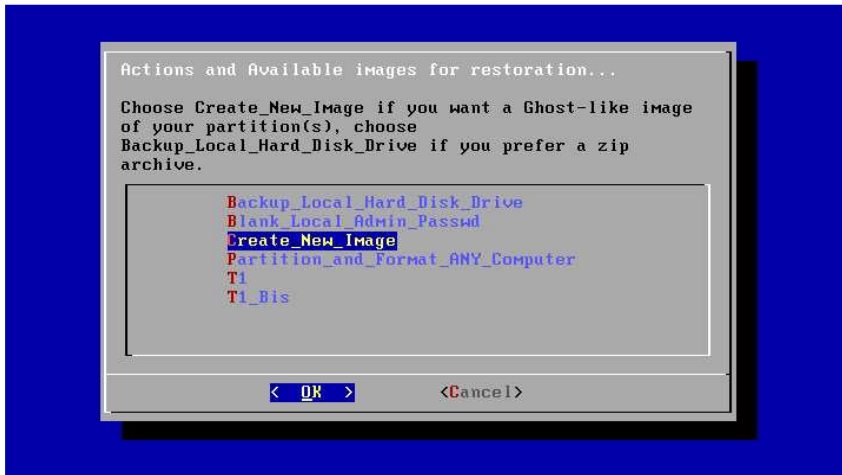


Now, the **directory path**, from the share to the PartImage directory.

Example: if you created C:\PartImage on server Billy, and shared it, then your resource should be \\billy\partimage. So, IP is Billy's IP, share is partimage, and directory is nothing.

Example: if you created C:\temp\PartImage on server Billy, but shared the temp directory, then your resource should be \\billy\temp\partimage. So, IP is Billy's IP, share is temp, and

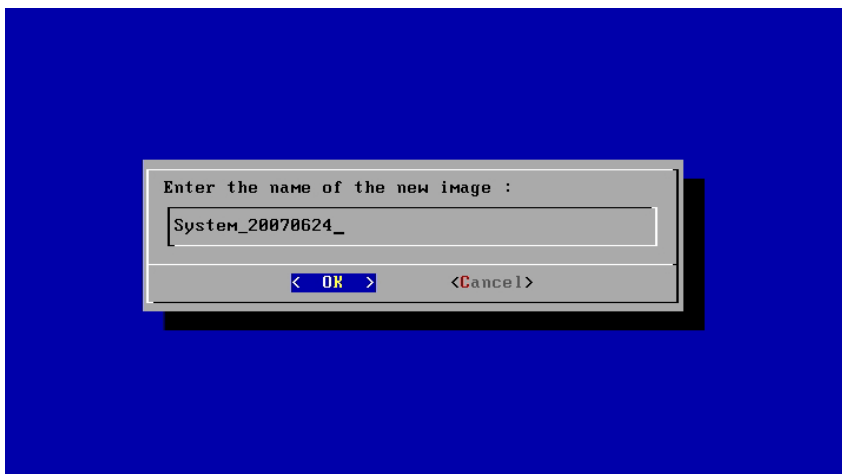
the directory is \partimage.



Here, you'll find the **list of available images**. In the example, "T1" and "T1_Bis" are two available images. They are stored in the directory we've just chosen. Choosing one image will restore the computer with it, thus erasing part of or all your hard disk.

- The **Create_New_Image** option is obviously not an image, but a choice permitting to create a new one out of the system you've booted on.
- If you need to blank the password of your local administrator, choose **Blank_Local_Admin_Passwd**.
- Note that **partitionning can be customized through a HDD_Target.txt file**. Go to the Annex for details.

We're back again to common trunk of the documentation, whether you chose to store the image onto a Network Share or onto a Local Partition.



Finally, tell the wizard **what to name your new image**.

In this example, PING will create a new **\PartImage\System_20070624** directory on the destination drive, and store the backup in it.

A screenshot is currently missing. You should now be asked if you would like another partition image recorder to be used instead of Partimage. We propose Partclone, Zsplit and the making of a Tarball. Please refer to the Annex (FAQ) as for the differences, pros and cons, and default choices. **Most users should choose the first, default, choice, i.e. Partimage.**

```
* Name of future image: [My_image_25-12-2005]
* Creating dir [/mnt/smbfs/X/SYSIMGEL/Projet/PING/PartImage/My_image_25-12-2005]
* Backupping bios

CmosPwd - BIOS Cracker 4.6, April 2005, Copyright 1996-2005
GRENIER Christophe, grenier@cgsecurity.org
http://www.cgsecurity.org/
* Backupping first sectors of hda
28+8 records in
28+8 records out
10240 bytes transferred in 0.036510 seconds (280470 bytes/sec)
* Listing partitions to be stored
* Checking /dev/hda1 for pagefile.sys and hiberfil.sys (to remove)
Captive NTFS v1.1.5. Check a new version at: http://www.jankratochvil.net/
* Removing [pagefile.sys]
```

That's all.

In this screenshot, BIOS settings are being saved...

```
----- save partition to image file -----
Partition to save:...../dev/hda1
Size of the Partition:.....7.81 GiB = 8389753344 bytes
Current image file:...../mnt/smbfs//PartImage/System_20070624/hda1.000
Image file size:.....10.90 MiB
Available space for image:..34.02 GiB = 36528193536 bytes
Detected file system:.....ntfs
Compression level:.....gzip

Time elapsed:.....10sec
Estimated time remaining:....9m:35sec
Speed:.....119.65 MiB/min
Data copied:.....19.94 MiB / 1.14 GiB

1% 1 %

copying used data blocks [* to cancel, CtrlS to pause, CtrlQ to resume]
```

Then, the partitions...

```
You are now given the possibility to login to the shell.
Please, be aware that PING log is stored in /tmp/x.log.
Log in as root, hit ENTER when asked for the password.

[root@PING /]# _
```

When the process is over, we get the shell we asked for.

```

C:\>dir e:\Partimage\System_20070624
Volume in drive E is SEA_DISK
Volume Serial Number is 621F-175A

Directory of e:\Partimage\System_20070624

25/06/2007  01:42  <DIR>          .
25/06/2007  01:42  <DIR>          ..
25/06/2007  04:33                384 bios
25/06/2007  04:33                512 hda
25/06/2007  04:41          660 588 229 hda1.000
25/06/2007  04:46          660 610 592 hda5.000
25/06/2007  04:41          32 518 459 hda1.001
25/06/2007  04:47          31 998 946 hda5.001
25/06/2007  04:33                10 240 hda1.first_sectors
25/06/2007  04:41                1 024 hda2.first_sectors
25/06/2007  04:41                10 240 hda5.first_sectors
25/06/2007  04:41
          9 File(s)      1 385 733 625 bytes
          2 Dir(s)     35 301 031 936 bytes free
C:\>_

```

On the directory we've stored the image into, you should get this kind of directory listing if you use the dir command in the Windows Command Prompt.

File Descriptions:

- **bios** stores a copy of your bios settings, and will be restored too. If you don't want to restore or store your BIOS settings, delete this file.
- **hda** stores the first sector of the first hard disk drive. The file might be called sda if SCSI or S-ATA. The Master Boot Record (MBR) should be inside.
- **hda1.000** and **hda1.001** (or sda1.000 if SCSI/S-ATA) are the partimage image files of the first partition of the first hard disk drive. Delete these files if you don't want this partition to be restored.

Notes:

- If Partclone is used instead of Partimage, these files will be called **hda1.img.gz.xaa**, **hda1.img.gz.xab**, and so on.
- If Zsplit is used instead of Partimage, these files will be called **hda1_0.spl.zp**, **hda1_1.spl.zp**, and so on.
- **hda1.first_sectors** (or sda1.first_sectors if SCSI/S-ATA) stores the 20 first sectors of the first partition of the first hard disk drive. They will be restored before the partimaged image, to ensure any boot sector stored in a partition rather than in the MBR will be restored. The LVM structure of a partition (Linux-context only) is also stored here.
- **HDD_Look.txt** stores the list of hard disk drives and partitions that have been found on the box you've written an image from. It's not used at this time.

Storing an image on a Bootable ISO

Storing an image on a LAN computer is nice, but sometimes, you may want to burn this image on a bootable DVD. It can be useful to bring such a media to a remote site, and regenerate a computer. It can also be considered as a practical way to backup a whole system.

Directory names are given here as samples. Adapt the following according to your specific needs and configuration.

1. We suppose you've recorder an image within the **C:\PartImage** directory. The image is called **My_Image_2008-12-25**.
2. **Download initrd.gz, kernel, isolinux.bin, logo.16 and boot.msg** and save these files within the **C:\PartImage\My_Image_2005-12-25** directory.
3. **Create a text file, called isolinux.cfg**, within the **C:\PartImage\My_Image_2005-12-25** directory, containing (be careful that the APPEND line must not have linefeeds! It's only one line) :

```
DEFAULT default
PROMPT 1
TIMEOUT 26
DISPLAY boot.msg

LABEL default
KERNEL kernel
APPEND vga=normal devfs=nomount pxe ramdisk_size=33000 load_ramdisk=1
init=/linuxrc prompt_ramdisk=0 initrd=initrd.gz root=/dev/ram0 rw noapic
nolapic lba combined_mode=libata ide0=noprobe nomce pci=nommconf pci=noms
irqpoll quiet

LABEL dummy
KERNEL kernel
```

4. **Download CDR Tools 2.0.1**. Install the EXE (there's an embedded MSI) on your computer.
5. Open a **DOS Prompt** and go to your image directory:

```

Microsoft Windows XP [Version 5.1.2600]
(C) Copyright 1985-2001 Microsoft Corp.

C:\>cd PartImage\My_Image_2005-12-25

C:\PartImage\My_Image_2005-12-25>dir
Volume in drive C has no label.
Volume Serial Number is C898-E981

Directory of C:\PartImage\My_Image_2005-12-25

23/11/2005  16:42    <DIR>          .
23/11/2005  16:42    <DIR>          ..
07/07/2005  12:28                384 bios
15/04/2005  20:19            3 629 562 kernel
07/07/2005  12:28                10 240 sda
07/07/2005  12:42            1 778 052 025 sda1.000
07/02/2005  09:01                10 388 isolinux.bin
24/07/2005  02:19                29 299 555 initrd.gz
08/11/2005  15:25                29 299 555 initrd.gz
20/07/2005  16:26                494 sda.part
22/08/2005  16:02                 22 sda2.zip
                9 File(s)  1 811 002 878 bytes
                2 Dir(s)  3 439 863 856 bytes free

C:\PartImage\My_Image_2005-12-25>_
    
```

6. Use `mkisofs` (from CDR Tools) to generate a bootable ISO:

```

Microsoft Windows XP [Version 5.1.2600]
(C) Copyright 1985-2001 Microsoft Corp.

C:\>cd PartImage\My_Image_2005-12-25

C:\PartImage\My_Image_2005-12-25>dir
Volume in drive C has no label.
Volume Serial Number is C898-E981

Directory of C:\PartImage\My_Image_2005-12-25

23/11/2005  16:42    <DIR>          .
23/11/2005  16:42    <DIR>          ..
07/07/2005  12:28                384 bios
15/04/2005  20:19            3 629 562 kernel
07/07/2005  12:28                10 240 sda
07/07/2005  12:42            1 778 052 025 sda1.000
07/02/2005  09:01                10 388 isolinux.bin
24/07/2005  02:19                29 299 555 initrd.gz
08/11/2005  15:25                29 299 555 initrd.gz
20/07/2005  16:26                494 sda.part
22/08/2005  16:02                 22 sda2.zip
                9 File(s)  1 811 002 878 bytes
                2 Dir(s)  3 439 863 856 bytes free

C:\PartImage\My_Image_2005-12-25>mkisofs -r -b isolinux.bin -no-emul-boot -boot-load-size 4 -o ../BurnMe.iso .
    
```

`mkisofs -r -b isolinux.bin -boot-info-table -no-emul-boot -boot-load-size 4 -o ../BurnMe.iso .`

⚠ Don't forget the trailing dot. If you're not familiar with DOS, remember that `mkisofs.exe` has to be stored somewhere in your `PATH` for this command to work. Why not store it in your `C:\WINDOWS\SYSTEM32` directory ?

7. The ISO generation should start...:

Annex

Notes :

- To **suggest a new feature**, please visit the [Forum](#) (PING section).
- **TIP:** if you've got to **duplicate an image over several computers** within a LAN, you'll have to **regenerate Windows' SID**. To do so, use **newsid.exe** from [SysInternals](#).

Special features / FAQ :

- **The PING.CONF file (read the whole paragraph before doing...)**

If you're bored with always having to re-type network and share settings...

- You can add an answers file to the Linux image. Its path is /etc/ping.conf and it already contains all available keys, in commented lines.
- To modify it to suit your needs, follow this procedure : *(just read it to get the idea, don't bother doing it... a second way is given, and it's probably easier).*

```

1. Boot PING on a machine that has at least 256 MB of RAM
2. Get a shell when proposed to, by typing 'x' and Enter
3. Login as root, no password
4. Connect to your network:
   - If there's a DHCP server, type: dhcpcd eth0
   - Else, type (adjust to your config):
     - ifconfig eth0 192.168.0.26 netmask 255.255.255.0 up
     - route add default gw 192.168.0.1
5. Mount a remote share (where your initrd.gz file can be found):
   - mount.smbfs //192.168.0.1/d/$ /mnt/smbfs -o
     username=domain\\username
     (or just username=username if this is a local user)
6. Assuming both your initrd.gz and ping.conf files are located
   in the root of the share, type:
   - gzip -d /mnt/smbfs/initrd.gz
   - mount -o loop /mnt/smbfs/initrd /mnt/loop
   - mkdir /tmp/rootfs
   - cd /tmp/rootfs
   - bzip2 -d -c /mnt/loop/rootfs.tar.bz2|tar xvf -
   - cp /mnt/smbfs/ping.conf /tmp/rootfs/etc/ping.conf
   - tar cvf - * |bzip2 -9 - >/mnt/loop/rootfs.tar.bz2
   - umount /mnt/loop
   - gzip -9 /mnt/smbfs/initrd
    
```

Remember that Linux's shell is case-sensitive.

From PING 2.00 RC8, it's possible to avoid having to modify the image to get the same result. Every key=value setting contained in the ping.conf file can be passed

directly to the kernel at boot time. To do this, simply edit your isolinux.cfg file (if CD/DVD, pxelinux.cfg\DEFAULT if PXE), and modify the APPEND line accordingly. Be careful that DOS linefeeds will cause problems – so, either edit the sample file available from the download section of the PING web site, or use a unix-friendly editor like Ultra-Edit (*tk's Fubar Bundy for the tip*).

For example, to have PING leave you to a shell after job completion, you'd add the string `After_Completion=Shell` to the APPEND line. Note that the syntax `key="value"` is accepted, allowing space chars to be passed too. Note also that backslashes (i.e. \) are escaping chars; if you need it for a path, or a domain\username combo, use a slash rather. If you really need a backslash, type two backslashes (the first one will escape the second one). E.g.: `User="mydomain\john"`. E.g.: `User="mydomain/john"`.

If the ping.conf file has been customized, you still can pass keys/values to the kernel at boot time. They'll be given priority over ping.conf's data.

List of currently supported settings :

	Key name	Possible Values / Examples	Description
Client network configuration	IP	Ex.: 192.168.0.1	The IP address you want the client to be assigned. Pass no IP if you've got a DHCP and want to use it.
	Netmask	Ex.: 255.255.255.0	The netmask corresponding to the IP.
	Gateway	Ex.: 192.168.0.1	The gateway corresponding to the IP.
	DHCP_Timeout	Ex.: 15	If you need to set a non-default timeout for DHCP, set it here in seconds.
Images location section	Server	Ex.: 192.168.0.1 Ex.: /dev/hda2,/dev/sda2	The IP of the host where images made with PING are located. The images can also be stored on a local partition; in such a case, mention it. If the images can be stored on different partitions, use commas to give several possible choices.
	Share	Ex.: MyShare	Name of the MS Share.

	User	Ex.: administrator	User to use (can be domain/user).
	Passwd	Ex.: secret	Password to send.
	Directory	Ex.: /Partimage	If you've made a directory in your share, give it here (in the example, the complete path was \\192.168.0.1\MyShare\Partimage).
Automating the image choice	Image_To_Restore	Ex.: My_Image_20071225	Specify here the name of the image to restore. This means that in Directory "/Partimage", to be found in share "//192.168.0.1/MyShare", there will be have to be subfolder called "My_Image_20071225".
	New_Image_Name	Ex.: My_Local_Backup	In the case you would like to automatize the creation of a new image, set Image_To_Restore to Create_New_Image. If you also want to force the name of that future image, use the New_Image_Name parameter. You may also set now the names of the partitions you'll want PING to store.
	Parts_To_Backup	Ex.: sda1,sda2,sdb1	If you set Image_To_Restore to "Create_New_Image", you can now define the partitions that will be stored. Note that if you want the 1 st part to be stored, and you don't know if the device will be IDE or SATA, you might set Parts_To_Backup to "hda1,sda1" – and nothing bad will happen if /dev/sda1 can't be found.
	Already_Existing_Image	Ex.: Update,Rename	Finally, if there's already an image in your Directory called after the New_Image_Name you have set, you might define here what PING should do with the Already_Existing_Image parameter. Set it either to "Replace" (old dir will be removed), or to "Rename" (old dir will be renamed to xxx.OLD.YYYYMMDDHHMMSS), or to "Update". The Update choice is only possible when the preexisting image has been made with version 3.00 or greater of PING, and if a xxxx.RecFiles.txt have been recorded (ex.: sda1.RecFiles.txt for partition /dev/sda1),

			containing the sizes and checksums of all files found on the part's filesystem. And if you set <code>Already_Existing_Image</code> to "Update,Replace", PING will try to update, but Replace if there's no <code>xxxx.RecFiles.txt</code> . "Update,Rename" is the last possible choice.
Misc	Repart	Y or N	If Repart is set to Y, and if you've got only one partition on your local hard disk drive and want to store an image of it locally, then this unique partition will be splitted for you. If set to N, PING will simply exit. And if commented, you'll be asked for what to do. May we suggest you'd better partition yourself for this kind of situation.
	After_C ompleti on	Shell or Reboot or Shutdown	What will PING do after the job is finished ? if Shell, you'll be dropped to a Linux shell. Useful if you want to check the <code>/tmp/x.log</code> log.
	Replace _BIOS	Y or N	Will we replace the BIOS if a "bios" file is found ? Note that you can simply delete this "bios" file before making your restorations to avoid having your bios params modified, but in some cases, you might want to have the bios settings recorded, and to restore them on a selection of target stations.
	CIFS_P referred	Y or N	To map a MS share, SAMBA can use either SMBFS or CIFS. For some reasons, it has been constated that CIFS can be much faster than SMBFS on some types of networks. And the contrary is true, too!
	NFS_Pr eferred	Y or N	Will use Sun's NFS protocol instead of Microsoft's SMB to mount the network share. Note that in this case, parameters Username and Passwd are useless.
	FTP_Pr eferred	Y or N	Will use the FTP protocol to map a distant share. Parameters Username, Passwd, Server and Directory are used, but not the Share parameter. Note that you can only restore an image by FTP, but not create one (yet).
	Partclo ne_Pref	Y or N	Set this to Y if you want Partclone to be used instead of Partimage. Partclone is a new

	erred		branch that is being developed after Partimage seems to have been discontinued. It works same as Partimage (it reads filesystems, no disk-dumping), and can handle newer filesystems (btrfs, reiser4, ext4, vmfs...) It's certainly getting better than Partimage, but be aware that we've found NO way so far to make DVD-spanning possible with Partclone-made images. You can let PING use Partimage by default safely; if the writing fails with Partimage, PING will automatically try Partclone, and finally zsplit.
	Zsplit_Preferred	Y or N	Set this to Y if you want zsplit, which is a dd-like utility, to be used instead of Partimage. Most users should use Partimage, and therefore set this param to N.
	Tarball_Preferred	Y or N	In some situations, you might want a tarball to be preferred to partimage. Note that making such an archive is only useful when you want to store files for a backup purpose. Restoring a PING image with tarballs will usually result in a system unable to boot (unless you fix the boot sector). Be aware also that NTFS ACLs cannot be archived by PING (yet). Most users should use partimage, and therefore set this param to N.
	No_Shell	Y or N	Set this option to Y if you don't want PING to propose the user to get a shell. Note that if you have also set the After_Completion key to Shell, the user will finally be given a shell. If the After_Completion key is not set at all, then the user won't be proposed to get a shell at the end of PING's job.
	Minimize_Before_Storing	Y or N	It can be interesting to reduce the size of the partition before storing it. Thus, it's possible to restore it later into a smaller partition. Note that even if we decide later to restore into a equally-big or bigger partition, PING will always try to maximize the size of the filesystem at the end.

			<i>You are strongly advised to have a full working backup of your system before choosing this option.</i>
AUTO	Y or N		If you want NO QUESTION to be raised, no popup at all, set this value to Y. It's equivalent to creating an empty AUTO file on the root of a PING CD/DVD (which is now deprecated, yet still supported for backwards compatibility). NB: if you wish a restoration to be automated, make sure to set also Restore_Only=Y .
Cmd_1			Cmd_1 is a shell command for PING to execute before the first blue welcome screen.
Cmd_2			Cmd_2 is a shell command for PING to execute after the mounting of SMB shares.
Cmd_3			Cmd_3 is a shell command for PING to execute at the end (before giving a shell or reboot or shutdown).
Force_Dirty_NTFS_Mount	Y or N		If set to Y, we'll mount R/W NTFS filesystems even if they have the dirty flag set. It's not recommended, of course, but it might help sometimes. If not set, the question will be raised.

Its_HD A_Stupid	Y or N	When trying to restore an image made on a PATA drive (called for example by linux hda) to a SATA drive (called sda), first versions of PING would complain and leave. Now, if the expected target device cannot be found, PING will propose to choose among detected HDDs. If there's only one possible choice and you don't want any possible interaction to be given to the user, set this parameter to Y.
Extend_Parts_Whenver_Possible	Y or N	Sometimes, you'll restore images to a bigger drive. Sometimes, there will be empty space after or between parts. Set this parameter to Y if you want PING to extend partitions and contained filesystems each time it's possible. If the param is not set, PING will ask the user.
Dont_Warn_Me	Y or N	Users will have to validate a screen warning if there's data on the disk and it's going to be overwritten -- except if AUTO mode is set on, or if the param Dont_Warn_Me is set on.
Compression_Type	Ex.: gzip	Set the compressor to be used. Else, will be asked. Can be set to 'gzip', 'bzip2' or 'no compression'.
Store_MD5	Y or N	<p>You can have PING store all names, sizes and MD5 checksums of files contained in a partition you store. In this case, this information will be stored in a file called sda.RecFiles.txt and stored in your image directory. The presence of this file will make it possible for you to have PING update this image later.</p> <p>(Note: it's not really an update, because partimage and zsplit-stored files cannot be addressed, but modified or added files will be stored in an archive, added to the</p>

			partimage/zsplit files).
Verbosity	Verbosity	0, 1 or 2	Defines the verbosity level (still, everything stored in /tmp/x.log) 0 = no verbosity at all 1 = only warnings and errors 2 = everything (default)
	Unique_Messa ge	Some text	If Verbosity is set to 0, it's a good idea to tell users that PING is still working on the system. Customize the message there.

- **What filesystems can be stored by PING ?**

- All filesystems are supported... Well , more or less.
- Partimage can read ext2, ext3, fat16, fat32, ntfs, reiser3, xfs.
- Partclone can also support ext4, btrfs, vmfs, and probably reiser4 (our self-compiled version of Partclone currently fails with reiser4; we're aware of the problem).
- Zsplit can handle all filesystems, because it does not read them, and only dumps the sectors. For this reason, it's slow and needs a lot of disk space. PING will always try Partimage and Partclone before switching to zsplit – unless you send parameters to force the using of zsplit by default. Unused sectors are not necessarily blank, and won't necessarily be efficiently compressed. If you have no other choice than zsplit, consider zero-ing the free space of your partition (ex.: mount /dev/sda1 /mnt/linux; dd if=/dev/zero of=/mnt/linux/foobar bs=1000000 count=1000000; rm /mnt/linux/foobar; umount /mnt/linux).

- **Can I restore an image to a bigger hard disk drive ?**

- Yes. Moreover, if the file system is NTFS, PING will always try to maximize its size, so you won't end up with unallocated disk space.

- **Can I restore an image to a smaller hard disk drive ?**
 - Yes, roughly, starting with version 2.01.10 of PING.
 - How does it work ? at the recording of the image, you should choose to have the filesystem minimized as much as possible before being written. Then, it should be easy to restore it anywhere, since you can restore an image to a bigger partition.

- **I've made a bootable DVD with my image and want no user interactivity at all.**
 - Before creating your ISO with mkisofs, add an empty file to the directory containing your image, and call it "AUTO" (no extension). When seeing this file, PING will raise no question... unless the answer is really needed. Combine the AUTO file with a customized /etc/ping.conf.
 - You can also set the AUTO parameter, either in the /etc/ping.conf file, or by passing it to the kernel. See the params section for more details.
 - Of course, use at your own risk, as such a DVD will boot and scratch everything ☺

- **What happens if I use a filesystem that is unknown to partimage ?**
 - Then PING will record the partition with zsplit. It's just like dd, yet faster. It will store your partition as bytes and not as files. Therefore, it will be much longer than what partimage would have done, and use far more space.
 - If you've got to industrialize the deployment of such partitions, consider blanking unused space (`dd if=/dev/zero of=foobar ; rm foobar`), and defragmenting. Then you should lose no space.

- **Can I boot on a USB flash drive ?**
 - Yes. Thanks to Blas and Fubar Bundy for the research & testing.
 - Mount your USB drive on Windows (say it's F:), preferably FAT32-formated.
 - Copy the following PING files to it => kernel, initrd.gz, isolinux.cfg .
 - On F:, rename isolinux.cfg to syslinux.cfg .
 - Download SYSLINUX from <http://syslinux.zytor.com/download.php>
 - Extract the file syslinux.exe from the file you've downloaded to your F: drive (it should be found here in the archive: x:\syslinux-3.51\win32\syslinux.exe)
 - Open a DOS prompt, and type: `f:\syslinux.exe -ma f:`

- It has also been reported that UNetbootin works great with PING (thanks ken). Get it there: <http://unetbootin.sourceforge.net/>.
- **My image is bigger than the capacity of a DVD. Can I store it on several DVDs ?**
 - Yes. This is a pretty new feature.
 - This works with images written using Partimage or zsplit, but NOT Partclone.
 - Say you've got a directory structure like this :

```

Directory of E:\Partimage\T1_Bis

24/06/2007  06:38                384 bios
24/06/2007  06:38                512 hda
24/06/2007  06:55           660 588 216 hda1.000
24/06/2007  06:56             32 518 458 hda1.001
24/06/2007  06:38                10 240 hda1.first_sectors
24/06/2007  06:56                 1 024 hda2.first_sectors
24/06/2007  06:56                10 240 hda5.first_sectors
24/06/2007  10:43                 38 hda2_0.spl.zp
24/06/2007  09:30           660 616 876 hda5_0.spl.zp
24/06/2007  09:38           660 615 020 hda5_1.spl.zp
24/06/2007  09:45           660 613 560 hda5_2.spl.zp
24/06/2007  09:53           660 618 499 hda5_3.spl.zp
24/06/2007  10:05           310 638 295 hda5_4.spl.zp
                13 File(s)  3 646 231 362 bytes
  
```

- And say you'd like to store it in 6 CD-Roms.
- Create an empty file in that directory, and call it "MULTI" (no extention).
- Add PING files to make the future ISO bootable (initrd.gz, kernel, isolinux.cfg, and isolinux.bin).
- You should have now :


```

Directory of E:\Partimage\T1_Bis

24/06/2007  06:38                384 bios
24/06/2007  06:38                512 hda
12/06/2007  10:37          4 164 232 kernel
25/06/2007  19:46                0 MULTI
24/06/2007  06:55        660 588 216 hda1.000
24/06/2007  06:56          438 213 hda5.000
24/06/2007  06:56          32 518 458 hda1.001
15/02/2007  11:44             10 932 isolinux.bin
22/06/2007  20:33             199 isolinux.cfg
24/06/2007  06:38             10 240 hda1.first_sectors
24/06/2007  06:56              1 024 hda2.first_sectors
24/06/2007  06:56             10 240 hda5.first_sectors
25/06/2007  14:10          22 766 432 initrd.gz
24/06/2007  10:43                38 hda2_0.spl.zp
24/06/2007  09:30        660 616 876 hda5_0.spl.zp
24/06/2007  09:38        660 615 020 hda5_1.spl.zp
24/06/2007  09:45        660 613 560 hda5_2.spl.zp
24/06/2007  09:53        660 618 499 hda5_3.spl.zp
24/06/2007  10:05        310 638 295 hda5_4.spl.zp
          19 File(s)  3 673 611 370 bytes
    
```

- o **First CD** should contain the following files :

```

Directory of E:\Partimage\T1_Bis

24/06/2007  06:38                384 bios
24/06/2007  06:38                512 hda
12/06/2007  10:37          4 164 232 kernel
25/06/2007  19:46                0 MULTI
24/06/2007  06:55        660 588 216 hda1.000
24/06/2007  06:56          32 518 458 hda1.001
15/02/2007  11:44             10 932 isolinux.bin
22/06/2007  20:33             199 isolinux.cfg
24/06/2007  06:38             10 240 hda1.first_sectors
24/06/2007  06:56              1 024 hda2.first_sectors
25/06/2007  14:10          22 766 432 initrd.gz
24/06/2007  10:43                38 hda2_0.spl.zp
          12 File(s)  720 060 667 bytes
    
```

- o **Second CD** should contain the following files :

```

Directory of E:\Partimage\T1_Bis

25/06/2007  19:46                0 MULTI
24/06/2007  06:56             10 240 hda5.first_sectors
24/06/2007  09:30        660 616 876 hda5_0.spl.zp
          3 File(s)  660 627 116 bytes
    
```

(Note: you'll call mkisofs this way (no boot): `mkisofs -r -o ../Image_2.iso .`)

- o **Third CD** should contain the following files :

```
Directory of E:\Partimage\T1_Bis
25/06/2007  19:46                0 MULTI
24/06/2007  09:38            660 615 020 hda5_1.spl.zp
                2 File(s)            660 615 020 bytes
```

- **Forth CD** should contain the following files :

```
Directory of E:\Partimage\T1_Bis
25/06/2007  19:46                0 MULTI
24/06/2007  09:45            660 613 560 hda5_2.spl.zp
                2 File(s)            660 613 560 bytes
```

- **Fifth CD** should contain the following files :

```
Directory of E:\Partimage\T1_Bis
25/06/2007  19:46                0 MULTI
24/06/2007  09:53            660 618 499 hda5_3.spl.zp
                2 File(s)            660 618 499 bytes
```

- Finally, **sixth CD** should contain the following files : (no more MULTI).

```
Directory of E:\Partimage\T1_Bis
24/06/2007  10:05            310 638 295 hda5_4.spl.zp
                1 File(s)            310 638 295 bytes
```

- **I've got some problems with the US keyboard...**
 - To gain space, PING has been compiled with the US keyboard only. It's qwerty, and we don't plan to add other flavors.
 - It might help you to know that you can use ASCII codes. For instance, you can type a backslash (\) by holding the ALT key down and typing 92 at the same time. The ASCII code for the pipe (|) is 124.
- **How to create a custom boot image on a floppy drive for PING ?** If you happen to get an error like "**PXE-E32: TFTP open timeout**", this may mean you need to create a custom boot disk for your NIC. Here are the steps... *(Thanks Curtis & Bobmetelsky for the tip)*
 - Identify the NIC type and model. Windows users, right click on my computer, manage, device manager, network adapters.

- Go to <http://rom-O-Matic.Net/5.4.3/> and download the image yournic###.zdisk that matches your NIC.
 - Download the Windows GUI of rawwrite <http://www.chrysocome.net/rawwrite> to write the image file into a floppy. (UNIX users will just cat the zdisk file to /dev/fd0).
 - Create the boot floppy. Rawwrite wants the name of the yournic###.zdisk and an A:\. From there, rawwrite will do all the work of creating the boot floppy. You do NOT need to create a system disk or anything like that.
 - Boot the PC from the A:\ and answer (N)etwork when prompted. The PC will boot and then look for your PXE server. From there, follow the standard PING documentation.
- **The hard disk drive of my DELL series 2800 and 2850, which uses the Perc 4e/Di Controller, cannot be seen.**
 - The Linux kernel uses MegaRAID drivers, and they are correct.
 - Yet, you should enter your MegaRAID BIOS Set Up Utility.
 - Enter the Adapter settings menu.
 - Under Other Adapter Options, select Emulation and set it to Mass Storage.
 - If the adapter is incorrectly set to "I2O" emulation, the system will attempt to load the i2o driver. This will fail, and prevent the proper driver from being loaded.
- **How can I put the PING ISO into my haddisk and boot from it ?**
 - PING can be used so to set up some kind of utility partition.
 - There are several ways to do it, and here's one of them. I've chosen to use **lilo** as a boot manager (either written in the MBR, or written into a file and called from the C:\boot.ini file), and to keep unchanged the files shipped with PING releases (that is, "kernel" and "initrd.gz"). That's the reason why there's still a ramdisk in the method described below, and even the keyword "pxe" in an append line. Really, other ways are possible.
 - Also, don't forget that you can ship your computer with an image stored on a second partition, and a bootable CDROM configured to automatically restore that image.
 - **First method – using lilo within the MBR :**
 - Boot a PING CDROM.
 - Get a shell when proposed to (type 'x').
 - In my system, there's only one IDE disk, which name is /dev/had (try sda for SATA/SCSI). So, here's the output of the "fdisk -l /dev/hda" command :

```
Disk /dev/hda: 8589 MB, 8589934592 bytes
255 heads, 63 sectors/track, 1044 cylinders
Units = cylinders of 16065 * 512 = 8225280 bytes
```

Device	Boot	Start	End	Blocks	Id	System
/dev/hda1	*	1	1044	8385898+	7	HPFS/NTFS

- We're going to store the restoration image and PING files in a second partition. We'll use EXT3 as the filesystem, to make the partition unreadable from Windows (well, difficult to read). Note that we could store the sole kernel file in a small EXT3 partition, and the cloned images on any filesystem. Let's keep it simple – one EXT3 part.
- In our example, a 2-GB-big partition is enough. First, let's resize our unique hda1 partition with the "ntfsresize -f -s 6000M /dev/hda1" command. Output :

```
ntfsresize v2.0.0 (libntfs 10:0:0)
Device name      : /dev/hda1
NTFS volume version: 3.1
Cluster size    : 4096 bytes
Current volume size: 8587153920 bytes (8588 MB)
Current device size: 8587160064 bytes (8588 MB)
New volume size  : 5999993344 bytes (6000 MB)
Checking filesystem consistency ...
100.00 percent completed
Accounting clusters ...
Space in use     : 1577 MB (18.4%)
Collecting resizing constraints ...
Needed relocations : 0 (0 MB)
WARNING: Every sanity check passed and only the dangerous
operations left.
Make sure that important data has been backed up! Power outage or
computer
crash may result major data loss!
Are you sure you want to proceed (y/[n])?
```

- Now, using fdisk, we must resize hda1 to 6000M, and create a new partition. Command: "fdisk /dev/hda".
- In our case, the fdisk commands are "p d n p 1 1 +6000M t 7 a 1 n p 2 enter enter w", resulting in this "fdisk -l /dev/hda" output :

```
Disk /dev/hda: 8589 MB, 8589934592 bytes
255 heads, 63 sectors/track, 1044 cylinders
Units = cylinders of 16065 * 512 = 8225280 bytes
```

Device	Boot	Start	End	Blocks	Id	System
/dev/hda1	*	1	730	5863693+	7	HPFS/NTFS
/dev/hda2		731	1044	2522205	83	Linux

- Finally, let's format hda2: "mkfs.ext3 /dev/hda2".
- Now, let's mount the two parts :
 - mount -t ntfs-3g /dev/hda1 /mnt/dos
 - mount /dev/hda2 /mnt/linux
- df should output something like :

Filesystem	1K-blocks	Used	Available	Use%	Mounted on
/dev/hdc	19582	19582	0	100%	/mnt/cdrom
/dev/hda1	5859368	1539268	4320100	27%	/mnt/dos
/dev/hda2	2482556	69304	2287144	3%	/mnt/linux

- We've got to store PING's files in our new linux partition :
 - cp /mnt/cdrom/initrd.gz /mnt/linux
 - cp /mnt/cdrom/kernel /mnt/linux
- Let's now write a lilo.conf file for /sbin/lilo to rewrite our MBR. It must be able to boot Windows on our hda1 partition, and Linux on the second one, with a (customizable but not customized here) text menu. Command: "vi /etc/lilo.conf" (i to insert text, :wq to save and exit). My lilo.conf file :

```
boot = /dev/hda
map = /mnt/dos/map
prompt
timeout = 150
vga = normal
lba32
delay = 30
read-only
large-memory
root = current

other = /dev/hda1
label = windows

image = /mnt/linux/kernel append=" vga=normal devfs=nomount pxe
ramdisk_size=33000 load_ramdisk=1 init=/linuxrc prompt_ramdisk=0
initrd=initrd.gz root=/dev/ram0 rw noapic nolapic lba
combined_mode=libata ide0=noprobe nomce pci=nommconf pci=nomsi
irqpoll"
label = restoration
initrd = /mnt/linux/initrd.gz
```

- Rewrite the MBR. Command: "lilo". It should output :

```
Added windows *
Added restoration
```

- You should now be able to boot your system and access PING if needed. You'll do so at least once, so to write on the linux partition the image of your windows system. Afterwards, if you don't want any more users to be able to boot this linux partition and do whatever they want with it, you still can customize the `append=""` section of your `/etc/lilo.conf` file (and rewrite the mbr). The optional parameters are described in the howto's annex.
- **Second method – writing lilo to the linux partition, and having Windows's boot sector boot optionally the linux restoration partition through the edition of the C:\boot.ini file :**
 - The procedure is almost similar to the first method.
 - The `/etc/lilo.conf` file will be slightly different :
 - First line will be: `boot = /dev/hda2`
 - You'll have to add a `ignore-table` entry.
 - We'll remove the Windows entry, and set the delay to 0 second.
 - So, your `/etc/lilo.conf` file should look like this :

```
boot = /dev/hda2
map = /mnt/dos/map
prompt
timeout = 150
vga = normal
lba32
delay = 0
read-only
large-memory
root = current
ignore-table

image = /mnt/linux/kernel append=" vga=normal devfs=nomount pxe
ramdisk_size=33000 load_ramdisk=1 init=/linuxrc prompt_ramdisk=0
initrd=initrd.gz root=/dev/ram0 rw noapic nolapic lba
combined_mode=libata ide0=noprobe nomce pci=nommconf pci=noms
irpoll"
label = restoration
initrd = /mnt/linux/initrd.gz
```

- When running the "lilo" command, you might get warnings, that can be safely ignored.

- After running “lilo”, we’ll have to extract the boot sector that has been written into the /dev/hda2 partition, and store it as a file in our Windows partition. Command: “dd if=/dev/hda2 of=/mnt/dos/bootsect.lnx bs=512 count=1”.
 - Finally, on our C:\boot.ini, we’ll append a line to the [operating systems] paragraph so to call our new C:\bootsect.lnx sector : “echo "C:\ \BOOTSECT.LNX="Restoration" >> /mnt/dos/boot.ini”.
-
- **How can I use PING with VMWare’s SCSI controllers ?**
 - You’ll have to check the LSI box (*tk's Tahussle*).

 - **How can I add components to the PING image without modifying the initrd.gz file ?**
 - From version 2.01.11, you can add or modify files after the PING OS has booted. To do so, simply add to the root of your CD/DVD files called addon-xxxx.tar.gz or addon-xxxx.zip. All addon-*.tar.gz/.zip found at this place will be untarred to the root of the OS.
 - For example, we have used this feature to provide the users with a PING ISO which contains the CLAM anti-virus. The initrd.gz file contained in the PING-2.01-WithAddons.iso image is exactly same as the one contained in the PING-2.01.iso image, but the file addon-clamav.tar.gz has been added to the WithAddons ISO.
 - If you plan to use this feature in a PXE environment, then the addon-*.tar.gz/.zip files should be stored in the directory that contains your image directories. Obviously, they will only be untarred after the network shares are mounted.
 - TIP: you might want to combine this addon feature with parameters Cmd_1, Cmd_2 and Cmd_3.

 - **I wanted to save an image to my Maxtor USB-drive, but ping can only see the ordinary IDE and the SATA disks. I can see the USB drive in the bios.**
 - If your BIOS settings has an option for plug and play (PNP) operating system, set it to disable or off (*tk's Ken*).

 - **I'm working on creating a SYSPREPed image with a recovery partition on the hard drive that can be used in the event of a catastrophic failure of windows (Which is about once every 5 - 6 months Very Happy or less).**

However the people that will eventually be using my imaged machines are all braindead and at some point one of them will want to choose the restore option which as we all know will cause me major grief.

I'm looking to have a prompt pop up for a password here. Does anyone know if this can be done..

- In the `/etc/lilo.conf` you need to add `password=your_chosen_password` into the entry for which ever image you want to password (*tk's laoistom aka Thomas*).

- **Can I modify the contents of partimaged files (sda1.000 etc.) ?**
 - These binary files cannot be mounted.
 - However, you can add a file called `sda1.zip` to your image directory. After restoring the partimaged files, PING will mount the restored partition and unzip this archive to the root of its filesystem. You can also add several archives, by calling them `sda1.000.zip`, `sda1.001.zip`, and so on.
 - Think of it as an easy way to update quickly an image without having to restore it, modify it, and re-build it.

- **Can I use sshfs to securely mount a remote share ?**
 - You won't see the `sshfs` option among the proposed protocols, because `ssh` supports several complex authentication ways.
 - Nevertheless, the possibility is given to you to do it yourself. To do so, add a `addon-xxx.tar.gz/.zip` file to your image directory, so to have your `ssh` keys added to the live filesystem, and use the `Cmd_1` parameter to pass a shell command that will mount the share. The mount point must be `"/mnt/smbfs"`.
 - Note: all files called `addon-xxx.tar.gz/.zip` and found on the root of a CD/DVD, or in the directory of an image, are untarred to the root of the live PING OS as soon as possible, which means: immediately in the case of a CD/DVD, and just after the share is mounted and the image chosen in the other case. So, obviously, you won't be able to use `sshfs` unless you deploy with a CD/DVD...

- **I've lost my partition table! What can I do ?**
 - Losing a partition table does not mean data has been lost.
 - If you know precisely what was your partition table looking like, you can recreate it using `fdisk` from the PING shell (\Rightarrow `fdisk /dev/sda` if your device was the first SATA/SCSI drive, `fdisk /dev/had` if it was the first IDE/PATA).

- If you don't have this information, you can call testdisk from the shell. Testdisk can scan a hard drive, and determine where partitions start, and what was their filesystem. It can also restore a bootsector, if a copy of it can be found in the filesystem (which applies to NTFS). See <http://www.cgsecurity.org/wiki/TestDisk> for details.
- If nothing can be done regarding the partition table, and you need to restore data, you might also use the photorec utility, which is also present on the PING image. Although the name of the tool might be misleading, it does recover deleted files. More details are available here: <http://www.cgsecurity.org/wiki/PhotoRec>.

Support

Like most admin tools, PING has been made easy enough to start with, but you might come across special, complex configurations and needs.

We are committed to improving PING as much as we can, and questions from users are often a useful feedback that makes it easier for us to find bugs to fix, or to develop smart new features.

For this reason, support can often be obtained for free on the PING forum : <http://www.windowdream.com/forum/viewforum.php?f=7> .

Yet, in some cases, you might need **dedicated support**, which could be consultancy days or mail/telephone support. Such a service is available, yet not free. For more information, please contact us :

EFFITEK SSII
4-10 rue Henri Murger
75019 Paris, France
+33 6 6550 2992
PING_Support@effitek.fr

License

PING is released under the same economic and licensing model as MySQL. Just like MySQL, you may download and use for free the Community Version of PING, released under the well-known GPL license.

Yet, if you own a business and need to include PING in paying software, you'll have to acquire the Enterprise Version of PING. Included with this version, you'll benefit from dedicated support from the dev' team, and more information. Most important, you'll also show your involvement for the community, by supporting a great opensource project.